

CASE REPORT

Open Access

Removal of a giant intrathoracic cyst from the anterior mediastinum

Wobbe Bouma^{1*}, Theo J Klinkenberg¹, Caroline Van De Wauwer¹, Wim Timens² and Massimo A Mariani¹

Abstract

A 45-year-old caucasian man with progressive dyspnea appeared to have a giant intrathoracic cyst in the anterior mediastinum encasing the heart and compressing both lungs. He underwent successful removal of the cyst through a median sternotomy. Recovery was uneventful. Gross examination revealed a thin-walled cyst filled with clear fluid. Microscopic histopathologic examination revealed a cyst wall lined by cubic cells and underlying loose connective tissue with remnants of thymic tissue. The definitive diagnosis was an intrathoracic (simple) mesothelial cyst. An intrathoracic mesothelial cyst is a benign, generally asymptomatic tumor that can be located in the anterior cardiophrenic angle, the paravertebral or paratracheal regions, or in the anterior mediastinum. It can become rather large before it becomes symptomatic, at which point surgical removal is generally warranted.

Keywords: Intrathoracic mesothelial cyst, Mediastinal tumor, Surgical removal

Background

An intrathoracic mesothelial cyst is a congenital abnormality and represents 3-6% of mediastinal tumors [1,2]. These cysts are generally asymptomatic [3] and located in the anterior cardiophrenic angle [2,4], but can also be found in the paravertebral or paratracheal regions [2] or in the anterior mediastinum, as shown in this case.

Case presentation

A 45-year-old caucasian man with no significant past medical history was referred to our institution with progressive dyspnea. A chest X-ray showed a large mass in the anterior mediastinum (Figure 1A,B). Transthoracic echocardiography showed a large echolucent space around the heart (Figure 1C; parasternal long-axis view). Computertomography showed a large cyst in the anterior mediastinum encasing the heart (Figure 1D; transverse view at the level of the aortic valve). The cyst was 33 × 22 × 4 cm in size with a radiodensity of 12 to 18 Hounsfield units.

The patient chose to have the cyst removed due to its symptomatic nature and he underwent successful removal of the giant cyst through a median sternotomy. Due to the location and size of the cyst and in order to keep the cyst intact during resection, we were required to perform a median sternotomy. The cyst did not involve the pericardium or other surrounding structures. Only mild adhesions were encountered and the cyst was left intact during resection. The cyst was thin-walled and filled with clear fluid (Figure 1E). A postoperative chest X-ray showed a remarkable improvement and a normal cardiac silhouette (Figure 1F). Postoperative recovery was uneventful with resolution of the patient's symptoms.

Microscopic histopathologic examination (Figure 1G) showed a benign cyst (wall) lined by cubic cells and underlying loose connective tissue with remnants of thymic tissue. Although remnants of thymic tissue were found, the cyst did not seem to originate from the thymus, as thymic cysts are generally lined by (simple) squamous epithelium. The definitive diagnosis was an intrathoracic (simple) mesothelial cyst.

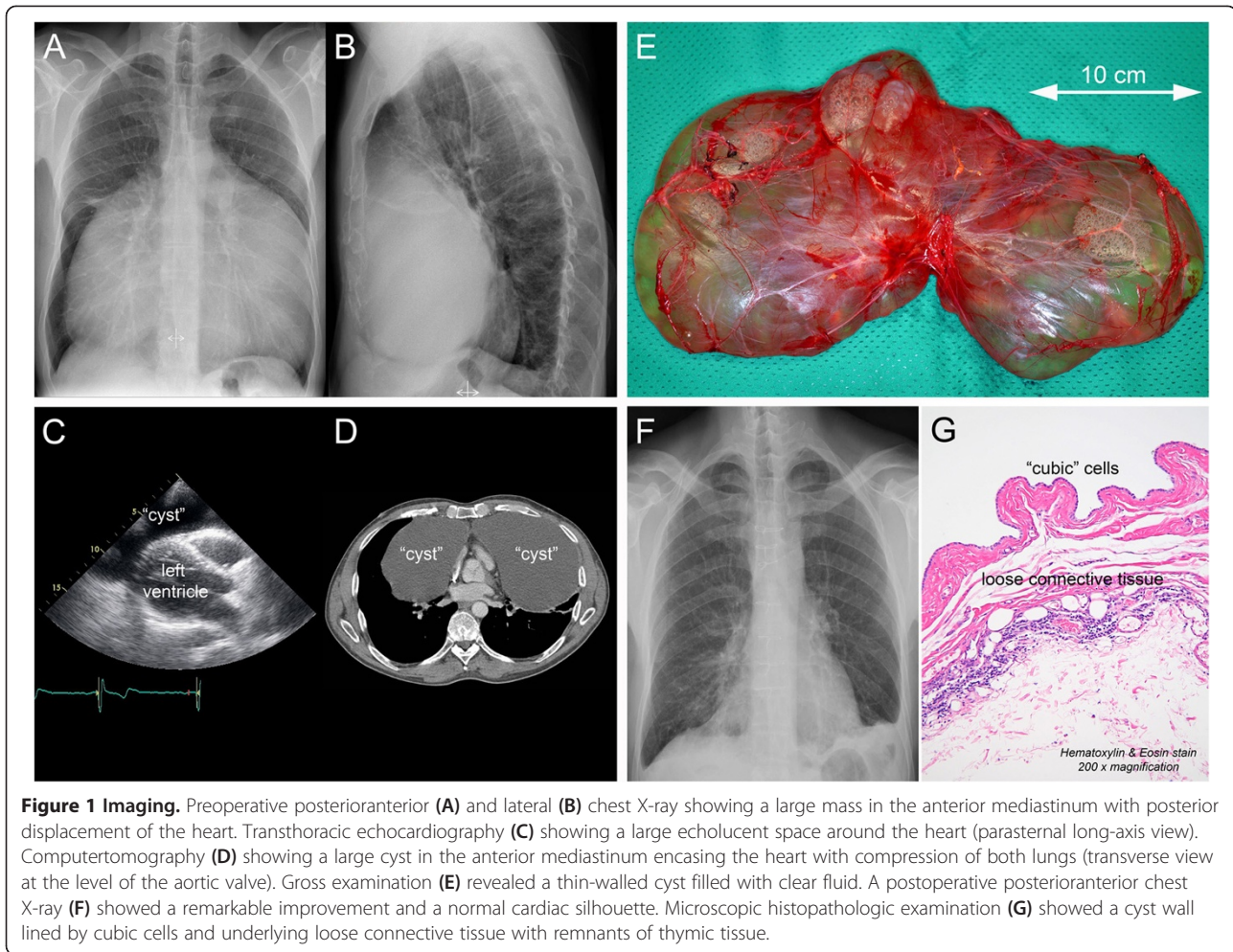
Discussion

An intrathoracic mesothelial (or "coelomic") cyst is a congenital abnormality. Little is known about the exact embryology, but mesothelial cysts are hypothesized to

* Correspondence: w.bouma@umcg.nl

¹Department of Cardiothoracic Surgery, University of Groningen, University Medical Center Groningen, Groningen, the Netherlands

Full list of author information is available at the end of the article



occur as a result of an anomaly in the development of the pericardial coelom [5]. Mesothelial cysts comprise 3-6% of mediastinal tumors and are usually diagnosed when patients are between 40 and 60 years of age [1,2]. An intrathoracic mesothelial cyst is a benign tumor that can become rather large before it becomes symptomatic.

The optimal management of intrathoracic mesothelial cysts is unknown. Due to its benign nature most asymptomatic cysts only require serial follow-up imaging [6]. Symptomatic cysts usually require treatment. Percutaneous ultrasound-guided or computed tomography-guided needle drainage of the cyst can be performed when symptoms are mild or if cytologic evaluation is required [4,7]. Cysts with more severe symptoms or complex cysts (irregular, multi-loculated, unusual location) require surgical resection [4]. Surgical resection can usually be performed with a limited thoracotomy or a videothoracoscopic procedure [2,8], but sometimes a median sternotomy may be required.

Conclusions

An intrathoracic mesothelial cyst is a benign, generally asymptomatic tumor that can be located in the anterior cardiophrenic angle, the paravertebral or paratracheal regions, or in the anterior mediastinum. It can become rather large before it becomes symptomatic, at which point surgical removal is generally warranted.

Consent

Written informed consent was obtained from the patient for publication of this case report and any accompanying images. A copy of the written consent is available for review by the Editor-in-Chief of this journal.

Competing interests

The authors declare that they have no competing interests.

Authors' contributions

WB and TK collected the data and wrote the manuscript. CW, WT, and MM participated in the design of the manuscript and they revised and critically reviewed the manuscript. All authors read and approved the final manuscript.

Acknowledgements

This study was financially supported by University Medical Center Groningen and the Groningen University Institute for Drug Exploration.

Author details

¹Department of Cardiothoracic Surgery, University of Groningen, University Medical Center Groningen, Groningen, the Netherlands. ²Department of Pathology, University of Groningen, University Medical Center Groningen, Groningen, the Netherlands.

Received: 11 June 2014 Accepted: 18 August 2014

Published online: 20 September 2014

References

1. Ferraro P, Martin J, Duranceau ACH, Rocco G, Shields TW: **Foregut cysts of the mediastinum & mesothelial and other less common cysts of the mediastinum.** In *General Thoracic Surgery*. 7th edition. Edited by Shields TW, LoCicero J III, Reed CE, Feins RH. Philadelphia: Lippincott Williams and Wilkins; 2009:2519–2539.
2. Mouroux J, Venissac N, Leo F, Guillot F, Padovani B, Hofman P: **Usual and unusual locations of intrathoracic mesothelial cysts. Is endoscopic resection always possible?** *Eur J Cardiothorac Surg* 2003, **24**:684–688.
3. Takeda S, Miyoshi S, Minami M, Ohta M, Masoaka A, Matsuda H: **Clinical spectrum of mediastinal cysts.** *Chest* 2003, **124**:125–132.
4. Myung RJ, Leshnowar BG, Miller JI: **Mediastinal coelomic cyst.** *Ann Thorac Surg* 2011, **91**:1967–1969.
5. Lambert A: **Etiology of thin-walled thoracic cysts.** *J Thorac Surg* 1940, **10**:1–7.
6. Ponn RB: **Simple mediastinal cysts; resect them all?** *Chest* 2003, **124**:125–132.
7. Walker MJ, Sieber SC, Boorboor S: **Migrating pleural mesothelial cyst.** *Ann Thorac Surg* 2004, **77**:701–702.
8. Hazelrigg SR, Landreneau RJ, Mack MJ, Acuff TE: **Thoracoscopic resection of mediastinal cysts.** *Ann Thorac Surg* 1993, **56**:659–660.

doi:10.1186/s13019-014-0152-2

Cite this article as: Bouma et al.: Removal of a giant intrathoracic cyst from the anterior mediastinum. *Journal of Cardiothoracic Surgery* 2014 **9**:152.

Submit your next manuscript to BioMed Central and take full advantage of:

- Convenient online submission
- Thorough peer review
- No space constraints or color figure charges
- Immediate publication on acceptance
- Inclusion in PubMed, CAS, Scopus and Google Scholar
- Research which is freely available for redistribution

Submit your manuscript at
www.biomedcentral.com/submit

